

Force for Positive Change:

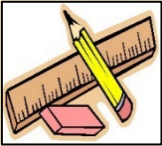
Our F4+C initiative is centred around the heartfelt gesture of children donating their creative artwork to Bullsmoor Lodge Care Home in Enfield. This care home, designed to provide both standard residential and specialised dementia care, offers a nurturing environment for elderly residents. Drawing inspiration from the captivating works of Katsushika Hokusai, known for his masterful landscapes, botanical art, and animal depictions, our young artists will create a collection of pieces that reflect a similar appreciation for the natural world. By framing some of the children’s artwork and donating them to the care home, we aspire to brighten the environment and bring joy to the residents. Our hope is that these pieces may evoke cherished memories or serve as a source of inspiration during art therapy sessions, enriching the lives of those at Bullsmoor Lodge.

Key Dates:

- 06/03/25 World Book Day
- 17/03/25 NFER assessment week
- 21/03/25 Red Nose Day
- 27/03/25- Parent Consultations

Maths:

Children will begin with consolidating their knowledge of place value up to 1000. In addition, children will continue learning different methods for the 4 operations: addition, subtraction, multiplication and division, before looking at problems involving fractions and decimal numbers to two decimal places. They will look at converting, which includes estimating, comparing and calculating different measures including money in pounds and pence. They will also measure and calculate perimeter and area. Finally, they will interpret and present discrete and continuous data using appropriate graphical methods, including bar charts and time graphs.



English:



In English, children will be reading Survivor-Escape from Pompeii by Jim Eldridge. The children will be using this text during their daily reading sessions as well as using this as a stimulus for writing. The writing genres that the children will be focussing on this term will be: poetry (vocabulary generation), fiction (portal story) and non-fiction (newspaper report). The grammar focus will be on apostrophes for plural possession, appropriate and varied pronouns and correct use of tenses, subordination, paragraphs and technical language. The reading skills that they will focus on are: predicting, clarifying, inferring, questioning, making connections and summarising.

Geography: Volcanoes & Earthquakes



In geography, the children will be learning about the impact of volcanoes & earthquakes on people and the environment. They will look closely at the city of Pompeii in Italy and discuss which human and physical features can be seen in the Pompeii region after the eruption of Mount Vesuvius in 79CE. They will also locate where features are found on the map of Italy and what information of Pompeii is provided on globes, atlases, online maps and satellite images.

Science: States of matter

The children will explore a variety of everyday materials and develop simple descriptions of the states of matter (solids hold their shape; liquids form a pool; gases escape from an unsealed container). They will also observe water as a solid, a liquid and a gas and observe the changes to water when it is heated or cooled.

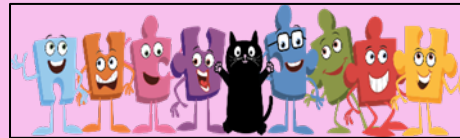


Outdoor PE: Invasion in games (handball)

This unit of work will develop pupils’ ability to apply the principles of attack vs defense, with a particular focus on creating simple attacking tactics in order to move the ball up the court, creating an attack that results in a shooting opportunity.



PHSE: Healthy Me



This term the children will be discussing healthier friendships, group dynamics and celebrating inner strength and assertiveness. The children will also look at the dangers of smoking and alcohol as well as peer pressure.

History: The Roman Empire and their legacy



Children will be learning about the Romans, the Roman Empire and its impact on Britain. They will investigate and interpret the past and build an overview of what Britain was like in 55 B.C with the withdrawal of the Romans.

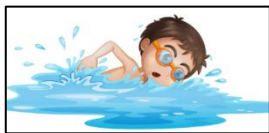
Computing: Data logging

In this unit, learners will consider how and why data is collected over time and consider how computers can use special input devices called sensors to monitor the environment. Learners will collect data as well as access data captured over long periods of time. They will review and analyse data.

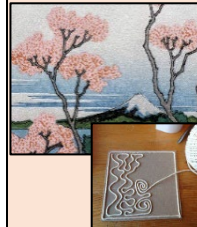


Indoor PE: Swimming

Year 4 will be continuing their swimming lessons at Waverley School; developing their skills and understanding of water safety.
Quartz – 1:40 – 2:25
Amber – 2:25 – 3:05 -late pick up from school approx. 3:20pm



Art: Block printing



This term the children will look at different ways of block printing, taking inspiration from Ukiyo-e art (a genre of Japanese art) created by Katsushika Hokusai. They will improve their mastery of art design techniques by using string and card to make line drawing prints which they will then dip in paint and create their own volcanic landscapes.

Music: Ukulele

The children will be using a ukulele to explore a range of genres. Their weekly music lesson will focus on different chords such as C to Am and F cords. They will practice chord changes to songs and identify a new tab. To end the unit, the children will begin to compose a song and finalise and perform a composition.



Spanish:

The children will recall prior learning and review places around the school. They will learn to tell the time and interpret a timetable to the hour. To end the unit, the children will be taught to identify places in town and describe it in basic detail.

